

Framing Focus

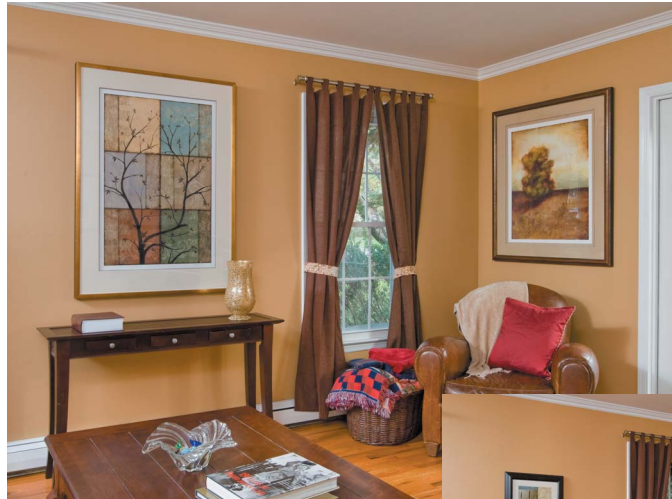
USE ART & FRAMING FOR YOUR ROOM MAKEOVERS

The square footage of the average American home is 2,500 square feet. Of all the space in that home, the wall space is usually the most neglected. So why not spruce up your home with some beautiful art and framing? It offers one of the most economical ways to give your living space a new look and will dramatically change the overall feel of your entire home.

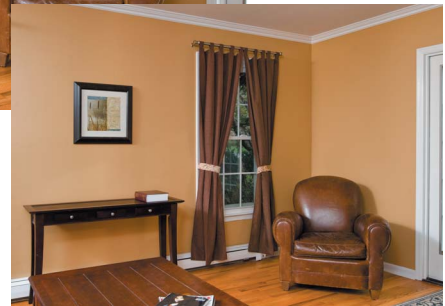
Start by choosing a room that has a lot of empty wall space. Then call us—the room makeover experts. Let us add artwork and family photos using just the right matting and frame designs. We can provide framed wall decor that will fit with your furnishings perfectly and will enhance any room. We'll produce all the elements you need to create an appealing balance that will make your home enjoyable to look at and to live in.

We are happy to make house calls and help you choose just the right art from our wide selection or reframe art you already enjoy. We will bring framing and matting samples so you can see firsthand how they will look in the rooms you want to liven up. We can also frame your own family photos or heirlooms for a hallway, den, living room, or bedroom, making them part of your everyday lives.

Let your eyes spend your hours at home looking at beautifully framed art instead of blank walls. Whether your decor is traditional or contemporary, we can help you achieve a whole new look with custom framing. ■



This living room went from empty and cold to warm and inviting by adding prints in sleek gold frames.



Adding beautifully framed art to bare walls in a bedroom made it come alive with color, creating a peaceful, restful setting.



Framing Unusual Objects



A Tooth Fairy doll is custom framed in a colorful, whimsical shadowbox design.

Shadowboxes are a great way to creatively frame collectibles, mementos, and memorabilia. Special unusual objects are best presented in shadowboxes as they call attention to the article and are truly original and custom made. For example, this Tooth Fairy doll was hung on a doorknob in a shadowbox to show how it was meant to be used. It also creates a unique, one-of-a-kind frame package.

The whimsical feel of the doll was

enhanced by using a detailed striped frame design, both inside and out. By using a wide mat border and creating a striped design that matched the doll, the theme was continued. Three different color frames are stacked to create more depth and also coordinate with the doll's clothing.

Look around and see what unusual objects you might have in the attic and bring them in for us to design an eye-catching memory just for you. ■
